

vision





Vision (lat. visio, 'viewing, appearance'):
image drawn in the imagination, related to the future.



HIGH QUALITY

BAVARIA Yachts has the highest quality and safety standards in the entire yacht construction industry. One reason for this is our close collaboration with the world's leading design company Farr Yacht Design. Together, we develop high-performance models which easily surpass all CE requirements. Additionally, our yachts, as well as our production facility, are regularly inspected by Germanischer Lloyd. This means certified quality from which all our yachts benefit – including the new VISION 46, of course.

A vision becomes reality





The concept development phase alone lasted six months. Product workshops were conducted in seven countries. Customers and dealers throughout the world were able to input their personal wishes and preferences. All construction and equipment features were planned and checked meticulously. This phase was followed by another six months of intensive construction and development.

The result: the new VISION 46. The first model of an exclusive yacht line in high-end design, it is going to create a sensation, especially in the owners market. The entire concept of this elegant cruiser yacht is designed with comfort in mind, with manoeuvring via joystick, tacking and trimming at the push of a button, and spacious cabins. Anyone who appreciates luxurious cruising will be very excited about the VISION 46.

Deluxe sailing



The interior of the VISION 46 is conducive to relaxing and dreaming. There is luxury everywhere, with spacious cabins, large windows, classy design and high-quality materials. The VISION 46 is optionally available with two or three cabins. It is a modern cruiser yacht that seems to be made to measure for demanding owners.

Technical data

Length overall	13.99 m
Length hull	13.70 m
Length waterline	12.83 m
Beam overall	4.19 m
Draught standard (option)	2.14 m (1.70 m)
Unladen weight	12.3 t
Engine	Volvo Penta D2-55
Fuel tank	210 l
Water tank	580 l

Cabins	2 / 3
Berths	4 / 6
Height in salon	2.0 m
Sail area "Sport"	103 m ²
Sail area "Comfort"	100 m ²
Height of mast above waterline	20.10 m
Persons	10 / 16
CE category	A / B

All data is subject to change without notice and provided without warranty.



2-cabin version



3-cabin version

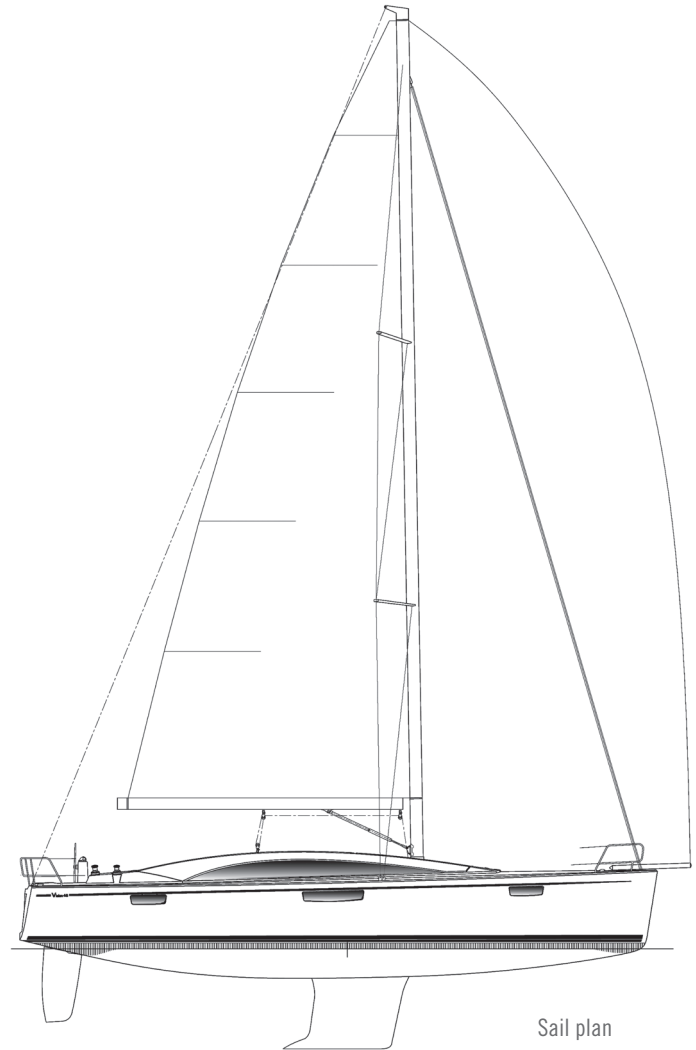
Features

TRIM CONTROL

Up until now comfortable and safe sailing with a small crew or as a single-handed sailor was only possible on super yachts.

Up until now. Today, the VISION 46 is setting new standards in its class. Trim Control makes the VISION 46 a genuine push-button sailboat. All sheet ropes and the most important trimming functions of the sails can be operated from both helm stands by pushing a button. Trimming, hauling and slacking – everything is child's play.

Even fully automated tacking manoeuvres are possible – thanks to the Auto Tack function. Pushing a button is all it takes for the integrated Garmin autopilot to tack the ship taking control of the foresail sheets. The need for releasing the sheets and the winches is completely eliminated. Pushing the button, tacking, fine trimming – done. This is smart sailing of the latest generation.



Mainsail	55 m ²	I	17.20 m
Foresail	50 m ²	J	4.79 m
Gennaker	148 m ²	P	16.58 m
		E	6.10 m



C DOCKCONTROL

BAVARIA developed a new, state-of-the-art joystick docking system specifically for the VISION 46. It makes manoeuvring in the harbour child's play. Dock Control grants complete control via joystick – of the ship as well as the system. With just one hand, the ship is moved from the box, the main engine is used for the propulsion of the ship and the two folding thrusters are operated.

When the system is activated, the plotter changes into a special display layout. The integrated monitoring system displays various pieces of information – e. g. the position of the thrusters, the gearbox position and the status of the wheel lock. And in case the safe maximum speed is exceeded, Dock Control automatically pulls the thrusters back in.

Colour combinations

Three veneers and three floorings are available for the VISION 46, plus a total of eight different kinds of upholstery. Information about the possible combinations may be obtained from your BAVARIA dealer.

Veneer



Sipo



Oak (option)



Teak (option)

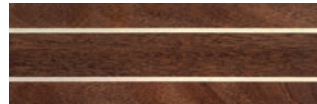
Flooring



Chestnut

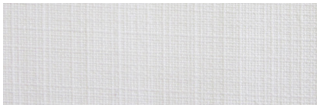


Walnut nature



Ocean Line (option)

Fabric



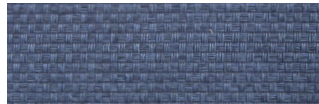
Standard Creme



Standard Blue



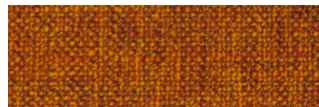
Comfort Creme (option)



Comfort Blue (option)

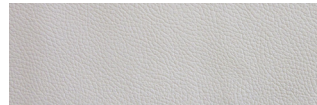


Comfort Brown (option)

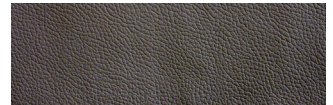


Comfort Orange (option)

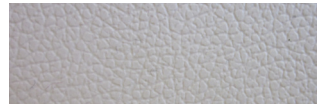
Leather (option)



Leatherette White



Leatherette Brown



Leatherette Creme Velour



BAVARIA Yachtbau GmbH · Bavariastraße 1 · D-97232 Giebelstadt · Germany · Tel. +49 9334 942-0 · Fax +49 9334 942-1160
www.bavaria-yachtbau.com · info@bavaria-yachtbau.com

Some of the yachts shown here are equipped with optional extras which are available at an additional cost. Some details are based on design drawings and the final execution may differ.
This catalogue is not part of a contract. All descriptions, photos, etc. are for illustration purposes only.