



**SOVEREIGN**

BBQ'S & GRILLS  
EUROPE



**UCHIMATA SAILING SERVICE - Official European Importer Distributor**

## **BBQ ALPHA** – 4 people and over

### **FLAT PLATE**

UCHI3493



### **FLAT/GRILL PLATE**

UCHI3494



**Overall size :** 600L x 380P x 295H mm

**Overall size lid open :** 600L x 520P x 535H mm

**Plate size :** 480L x 280P mm

**Front mount centres :** 523 mm

**Approximate weight :** 17,3kg

## **BBQ BRAVO** – suit up to 4 people

### **FLAT PLATE**

UCHI3523



### **FLAT/GRILL PLATE**

UCHI3524



**Overall size :** 480L x 350P x 240H mm

**Overall size lid open :** 480L x 445P x 470H mm

**Plate size :** 350L x 240P mm

**Front mount centres :** 394mm

**Approximate weight :** 12,3kg

## **Quality construction and finish**

- Marine grade 316 stainless steel : Rust resistant
- Fully welded construction : No folding, no sharp edges
- Single stainless steel burner for excellent heat distribution
- BBQ plate made from 3CR12 material : A superior cooking surface, excellent thermal conductivity and rust resistance
- Piezo ignition & heat control combined : Simple and user friendly
- Roasting hood : Suitable for roasting or baking

## **A clean deck**

- Functional fat drain system and sealed base compartment
- Splash back at rear of BBQ plate - Prevents fat splatter
- Splash / wind guards on each side of BBQ – protects your boat from unwanted fat splatter when cooking with the lid open

## **Beating wind and heat**

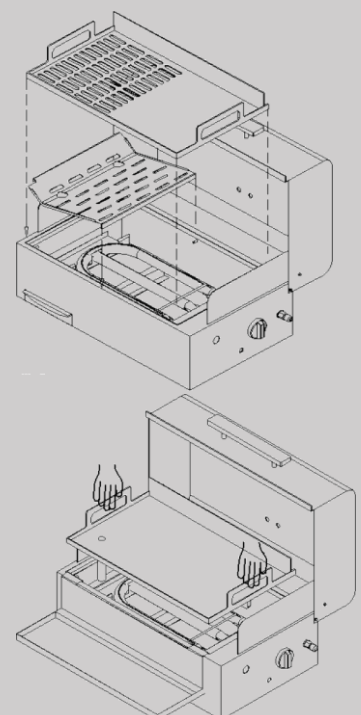
- Baffled air intake : Reduced chance of BBQ blowing out in strong winds
- Wind guards on each side of BBQ – keeps cross winds at bay while cooking with the lid open and increases plate temperature in poor weather conditions
- Double skinned base compartment : Reduced heat transfer to BBQ exterior
- Adjustable steam vent on top of lid

## **Making the deckhand's life easy**

- Removable BBQ plate with handles for easy cleaning and access to the burner – ever tried to remove a dirty BBQ plate for cleaning without handles.....?
- Internal components can be quickly and easily removed for efficient cleaning and servicing

## **Safety first**

- Certificate CE 1312CP6007 and AGA tested and certified
- Thermocouple protection – Flame failure safety
- Piezo ignition system – No need for matches
- Excellent serviceability – just ask your local gas technician





## Options - Accessories

### Plate selection

#### **Flat plate**

Alpha UCHI3529  
Bravo UCHI3531



#### **Flat/Grill plate**

Alpha UCHI3530  
Bravo UCHI3532



### Utensil tray

Alpha UCHI4174  
Bravo UCHI4175



### Oven Wire

Alpha UCHI3521  
Bravo UCHI3522



Remove the BBQ plate  
and convert for  
'stove top' use

### BBQ Cover

Black: Alpha UCHI3525 - Bravo UCHI3527



Blue : Alpha UCHI3526 - Bravo UCHI3528



## Simple and customizable installation

- Front, centre & rear mounting points suitable for every possible installation alternative, including custom requirements or most typical installation using our standard range of mounting options.
- A wide range of both rail and deck mounting options to suit most requirements.

### Front mount

UCHI3517



### Recess deck

UCHI3515



### Rail mount

UCHI3516



### Centre mount

UCHI3518



### Removable pin mount

UCHI3520



### Telescopic rod

UCHI3519



Recess deck + front mount :



Recess deck + centre mount :



Rail mount + front mount :



Telescopic rod :





Nordhavn 52



Lipari 41



Hunter 45



Lagoon 400 S2



Hélia 44



Salina 48 Evolution



Hylas 46



Summerland 40