

3. Turn the clutch knob either 4 clicks clockwise to tighten the clutch, or 4 clicks anti-clockwise to loosen the clutch.
4. Use the allen key to re-tighten the clutch knob screw.
5. Check that the wheel still moves freely with the clutch off.

Note: *If the wheel does not move freely, reduce the clutch tension by turning the clutch knob 2 clicks anti-clockwise and check again*

6. Check the drive's operation with the clutch engaged.

This procedure is usually sufficient to correct a slipping or dragging drive belt. In some cases, however, you may need to repeat the steps to adjust the clutch further.

4000 mk2 Wheel Drive

Clutch Kit (A18084) Installation Instructions

Introduction

This leaflet explains how to use the clutch kit (A18084) to replace the clutch eccentric and/or roller on the 4000 mk2 wheel drive.

Parts supplied



Clutch roller



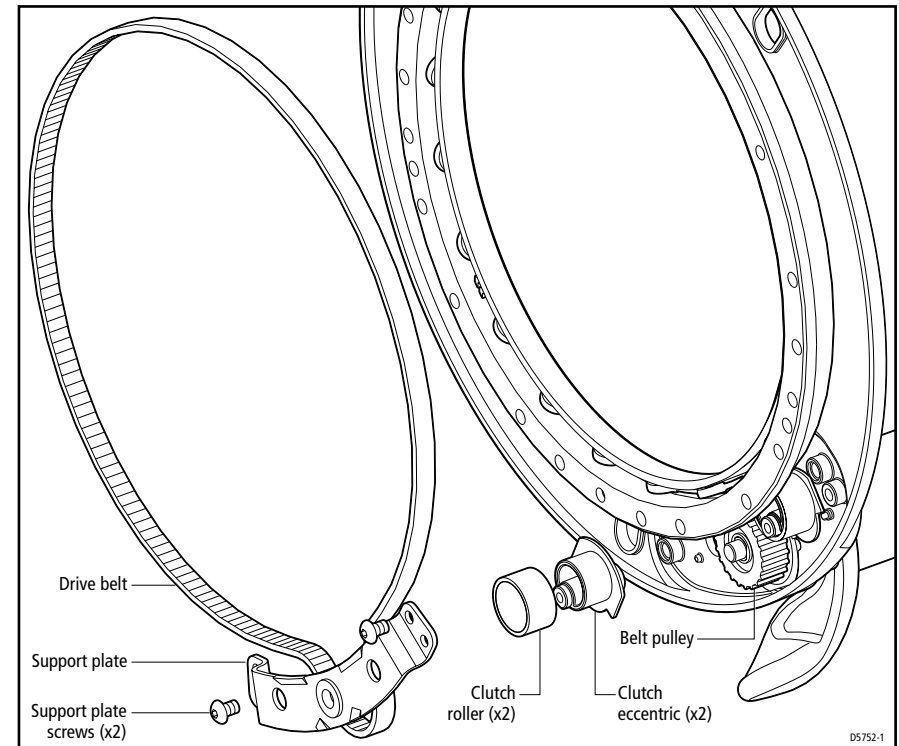
Clutch eccentric



M5 x 30 mm screw

D5754-1

Removing the clutch eccentric and roller



D5752-1

1. Remove the wheel drive from the wheel and release the clutch.
2. Remove the front cover by pulling it up and away from the back cover.
3. Remove the support plate:
 - use a 3 mm allen key to unscrew and remove the 2 support plate screws
 - lever the support plate away from the back cover
4. Remove the clutch roller from the clutch eccentric.
5. If you need to replace one of the clutch eccentrics:
 - unscrew and remove the lever screw or ratchet knob screw
 - pull the lever or ratchet knob off the back cover
 - then remove the eccentric

Fitting the new clutch eccentric and roller

To fit the new clutch eccentric and/or roller, and reassemble the wheel drive:

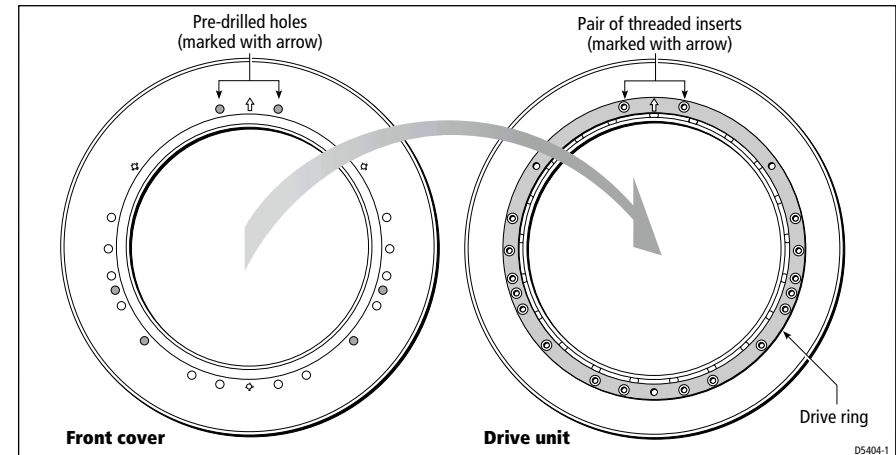
1. Fit the clutch eccentric (with its flange downwards), so it is clear of the foul pin on the back cover.
2. Fit the clutch roller over the clutch eccentric.
3. Fit the clutch lever or ratchet knob.

To fit the clutch lever:

 - place the clutch lever onto the eccentric spindle (it should be positioned between the two pips on the rear of the back cover)
 - insert and tighten the clutch lever screw
 - check that the lever engages and disengages the clutch

To fit the clutch ratchet knob:

 - place the clutch ratchet knob over the eccentric spindle
 - insert and tighten the clutch ratchet knob screw
4. Fit the support plate:
 - fit the support plate over the clutch eccentrics and gearbox shaft, making sure the plate is pressed down fully
 - insert and tighten the 2 screws
5. Fit the front cover:
 - align the arrow on the inside of the front cover with the arrow on the drive ring (see diagram on opposite page)
 - press all around the front cover to secure it to the drive unit
6. You must now adjust the clutch (see opposite page)

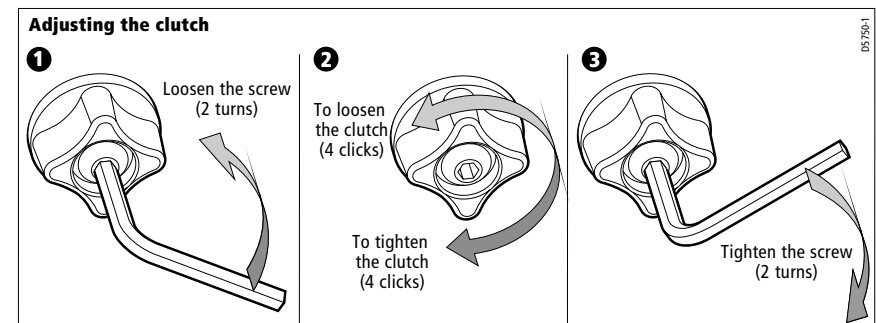


Adjusting the clutch

You need to adjust the clutch if you have replaced a clutch eccentric and/or clutch roller.

When the clutch is correctly adjusted:

- the drive ring can rotate freely when the clutch is disengaged
- the drive belt does not slip when the clutch is engaged and the motor is driving



To adjust the clutch:

1. Engage the clutch.
2. Use a 3 mm allen key to loosen the clutch knob screw about 2 turns anti-clockwise.